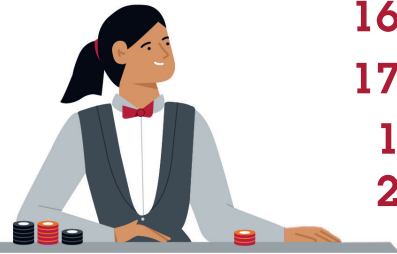


# GAMBLING IN B.C.

BCLC games are available in almost every community in B.C.

- 16** community gaming centres
- 17** casinos
- 1** bingo hall
- 2** racetrack casinos



**3472** lottery locations

**\$894 million**

in prizes to players for lottery, bingo & sports betting in 2020/21

**\$25 billion**

has been invested in B.C. communities over the past 36 years

Thanks to players, **\$419 million** in net income was delivered to the Province of B.C. in 2020/21.



Funds generated by gambling go back to the Province to support important initiatives like:

Healthcare

Community Gaming Grants

Host Local Governments

Education

BC First Nations Gaming Revenue Sharing Limited Partnership

Read more about how gambling revenues help communities grow at:

[corporate.bclc.com](http://corporate.bclc.com)



## BCLC'S SOCIAL PURPOSE

A social purpose company is a company whose enduring reason for being is to create a better world. Its growth is a positive force in society. After engaging extensively with stakeholders, facilitating additional research and conducting a number of in-depth interviews, BCLC recently achieved a significant milestone with the approval of our social purpose. At BCLC we exist to:

**Generate win-wins for the greater good.**

Everything we do must benefit the well-being of all involved. "Win-win" within our social purpose asks our employees, partners, and stakeholders to continually consider the impacts of all activities and decisions on individuals, institutions, communities and the planet. Social purpose is a long-term journey, an ongoing quest, continuously pursued. With our social purpose, we're striving to ensure, in all our endeavours and transactions and relationships — in the most important sense of life, livelihood, meaning, and well-being — nobody loses and every person we touch comes out ahead.

### HEAD OFFICE

74 West Seymour Street, Kamloops, B.C. V2C 1E2

### VANCOUVER OFFICE

2940 Virtual Way, Vancouver, B.C. V5M 0A6

### CUSTOMER SUPPORT

1 866 815 0222

Learn more about BCLC at [corporate.bclc.com](http://corporate.bclc.com)



# Adams Lake Indian Band & Salmon Arm Community Impact Report

2020/21



## PLAYING IT FORWARD

# WITH THE ADAMS LAKE INDIAN BAND

Local governments that host a gambling facility in their community receive a 10 per cent share of the gambling revenue it generates each year. As a result of the COVID-19 pandemic, in March 2020, all casinos, community gaming centres and bingo halls across B.C. were temporarily closed, including Chances Salmon Arm. With the closure, the Adams Lake Indian Band did not receive funds normally allocated to support local projects and initiatives.

BCLC and its casino service providers safely reopened casinos and community gaming centres on July 1, 2021 as part of Step 3 of the Province's restart plan. Players will notice robust health and safety measures when they return to including Chances Salmon Arm.



## SPOTLIGHT: GAMBLING REVENUE IN SALMON ARM

In 2018/19, the Adams Lake Indian Band received \$634,000 generated by Chances Salmon Arm to fund local initiatives.

2019



## GAMBLING CONTRIBUTES

# TO THE ADAMS LAKE INDIAN BAND & SALMON ARM ECONOMIES

7,938+ registered players

22

lottery locations in Salmon Arm

1

community gaming centre Chances Salmon Arm

\$2.55 million

in provincial gambling revenue generated by Chances Salmon Arm for the Adams Lake Indian Band since opening

\$1.24 million

prizes paid out at BCLC's head offices for 60 winning lottery tickets purchased in Salmon Arm in 2020

## PLAYER HEALTH INITIATIVE

GameSense Advisors (GSAs) are responsible gambling specialists typically located at every gambling facility in B.C. They help players by answering gambling-related questions, supporting Voluntary Self-Exclusion enrollments, and when necessary, providing referrals to the free gambling outreach support offered by the Province of B.C. This is an invaluable service for some of our customers and with the temporary closure of all gambling facilities, it led to decreased access and support on a daily basis. In recognizing this need, BCLC enhanced its player health supports by offering more one-on-one accessibility to GSAs conveniently over the phone and through live chat on PlayNow.com. Now available by phone and live chat, players who choose to gamble have someone they can talk to about their well-being so they can stay within their gambling limits.

## GAMBLING REVENUE

# FUNDS LOCAL INITIATIVES IN SALMON ARM

Each year, the Province of B.C. allocates \$140 million to community organizations through the Community Gaming Grants program.

34

organizations in Salmon Arm received funding last year

\$839,360

went to support those organizations in the human and social services sector, public safety, sports, arts and culture, and parent advisory councils

## COMMUNITY GAMING GRANTS

Last year, 11 human and social services-focused organizations in Salmon Arm received Community Gaming Grants, totalling over \$282,000. This funding supports the delivery of accessible and inclusive programs and services within the community.

Organizations in Salmon Arm that received a Community Gaming Grant last year include:

- Seniors Resource Centre (Salmon Arm) Society
- Shuswap Family Resource and Referral Society
- Rotary Club of Salmon Arm

